



# PORTO LAGO

APARTAMENT

NR **101**



Działka Nr 168/1  
Serock



## 44,42 m<sup>2</sup>

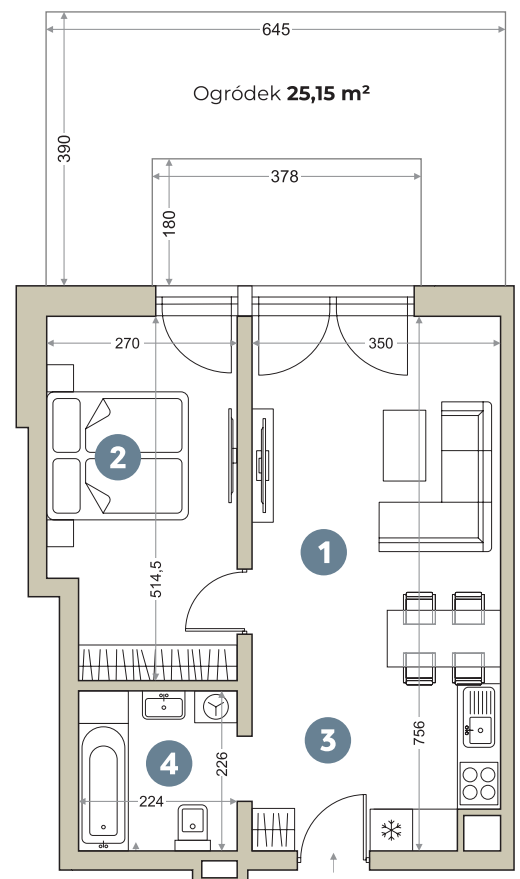
### BUDYNEK 1 KLATKA A

|                              |                            |
|------------------------------|----------------------------|
| 1. Pokój z aneksem kuchennym | <b>23,02 m<sup>2</sup></b> |
| 2. Pokój                     | <b>13,26 m<sup>2</sup></b> |
| 3. Hol                       | <b>3,08 m<sup>2</sup></b>  |
| 4. Łazienka                  | <b>5,06 m<sup>2</sup></b>  |
|                              | <b>44,42 m<sup>2</sup></b> |

### PARTER



### CENA





PORTO LAGO

