



# PORTO LAGO

APARTAMENT

NR **116**



Działka Nr 168/1  
Serock



## 46,43 m<sup>2</sup>



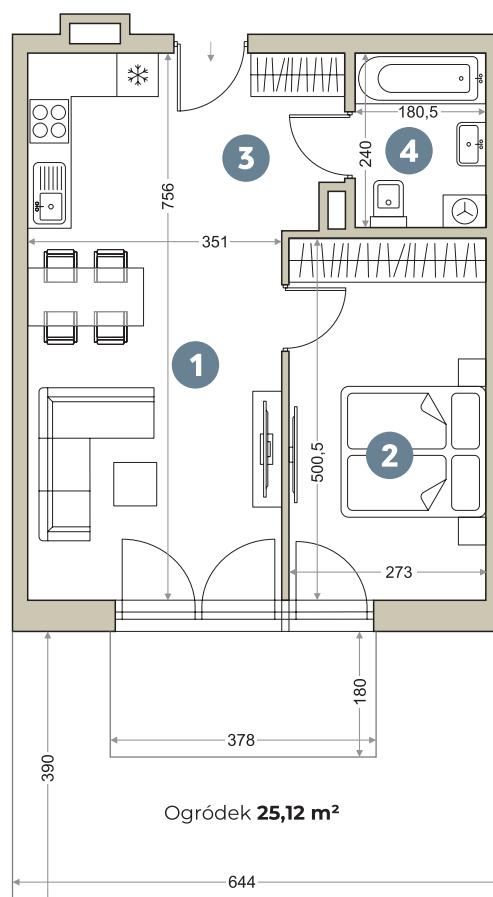
CENA

### BUDYNEK 1 KLATKA B

- |                              |                            |
|------------------------------|----------------------------|
| 1. Pokój z aneksem kuchennym | <b>23,83 m<sup>2</sup></b> |
| 2. Pokój                     | <b>13,66 m<sup>2</sup></b> |
| 3. Hol                       | <b>4,33 m<sup>2</sup></b>  |
| 4. Łazienka                  | <b>4,61 m<sup>2</sup></b>  |

**46,43 m<sup>2</sup>**

### PARTER





PORTO LAGO

