



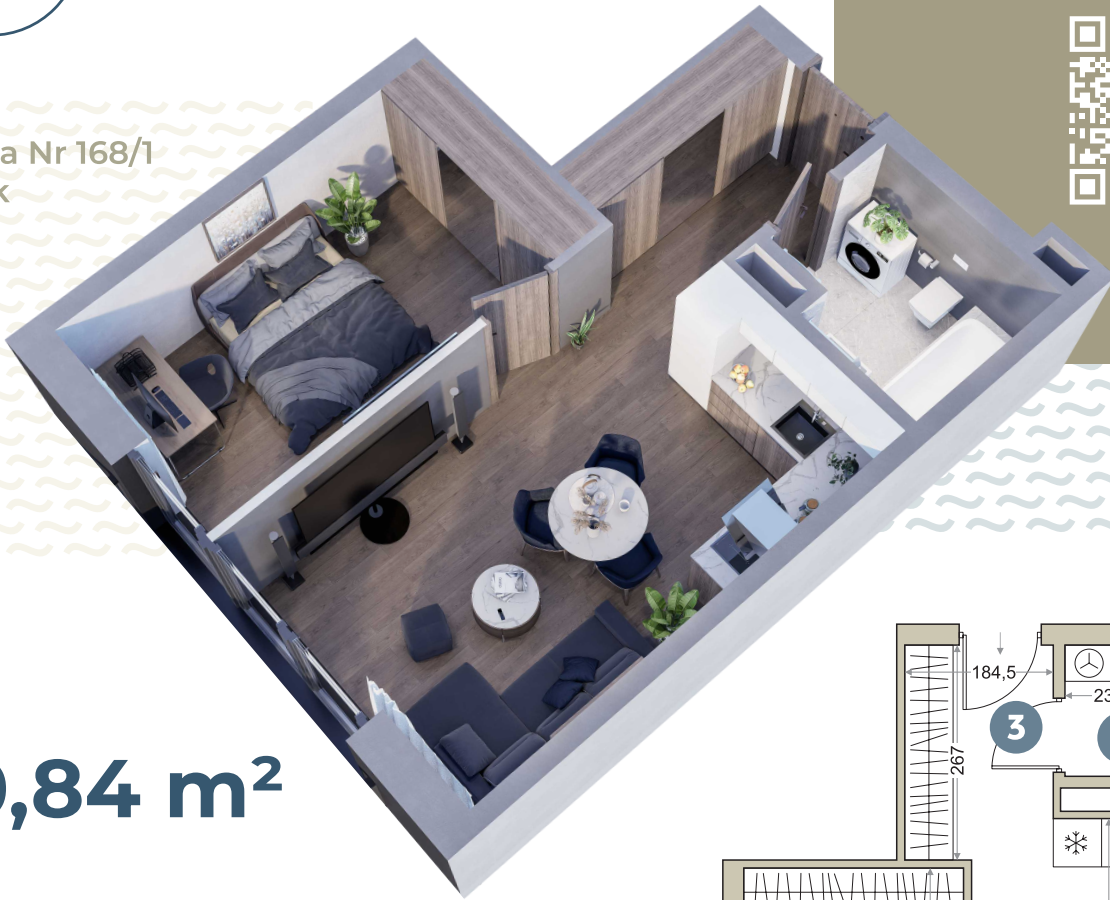
PORTO LAGO

APARTAMENT

NR **106**



Działka Nr 168/1
Serock



40,84 m²

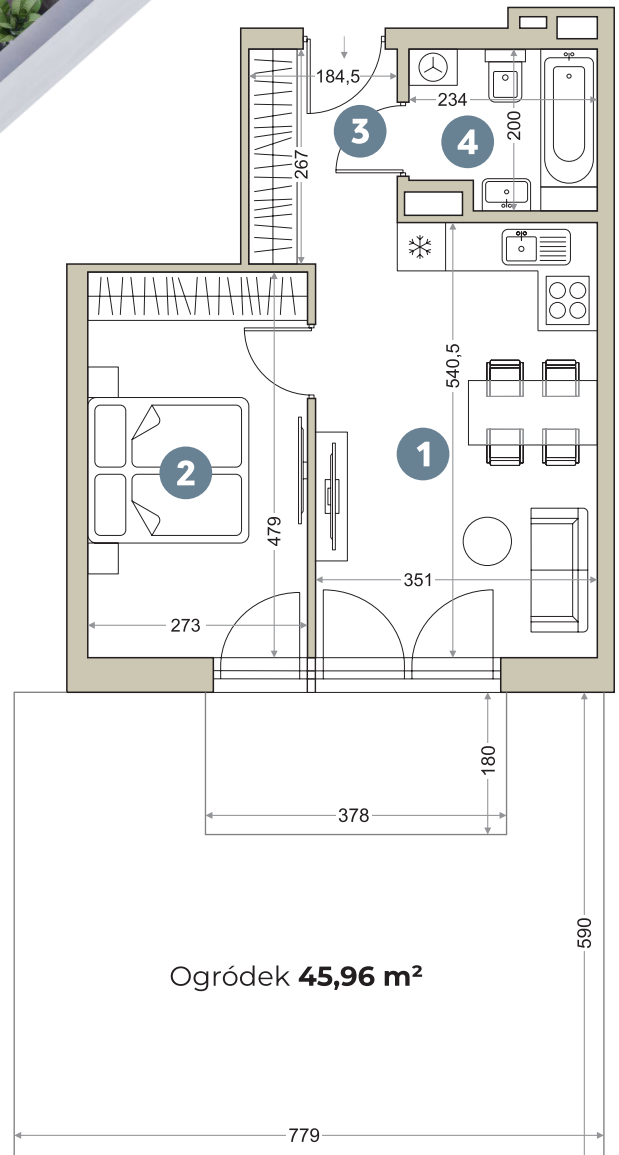
CENA

BUDYNEK 1 KLATKA A

- | | |
|------------------------------|----------------------------|
| 1. Pokój z aneksem kuchennym | 18,45 m² |
| 2. Pokój | 13,08 m² |
| 3. Hol | 4,93 m² |
| 4. Łazienka | 4,38 m² |

40,84 m²

PARTER





PORTO LAGO

