

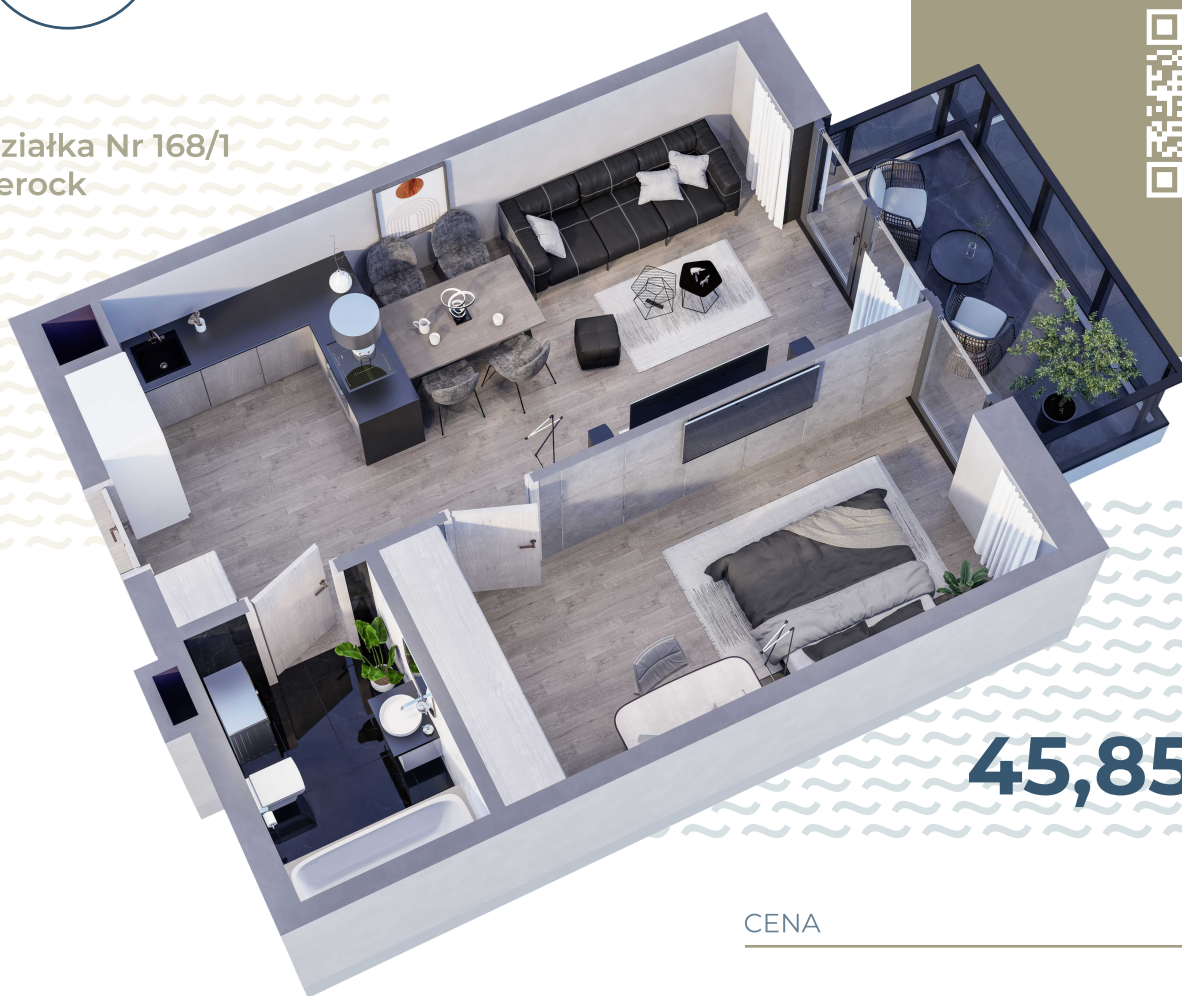


# PORTO LAGO

APARTAMENT  
NR 207



Działka Nr 168/1  
Serock



## 45,85 m<sup>2</sup>

CENA

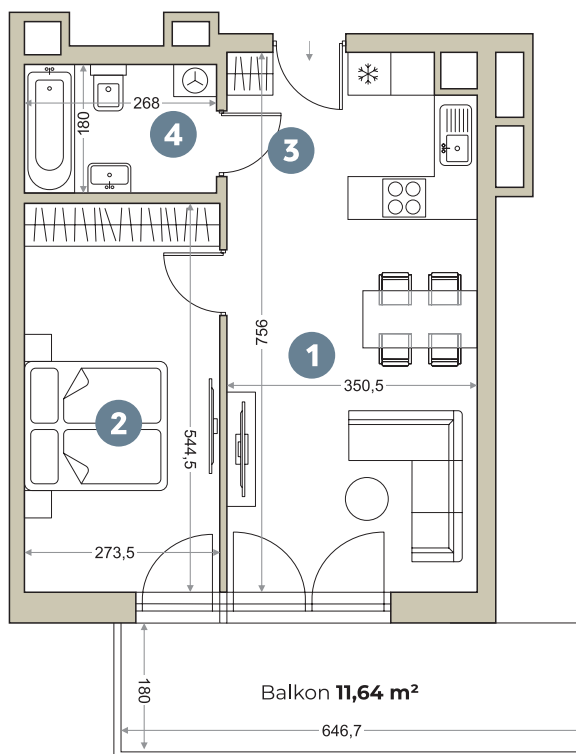
### BUDYNEK 1 KLATKA A

- |                              |                      |
|------------------------------|----------------------|
| 1. Pokój z aneksem kuchennym | 23,05 m <sup>2</sup> |
| 2. Pokój                     | 14,89 m <sup>2</sup> |
| 3. Hol                       | 3,09 m <sup>2</sup>  |
| 4. Łazienka                  | 4,82 m <sup>2</sup>  |

45,85 m<sup>2</sup>



### PIĘTRO 1





PORTO LAGO

