



# PORTO LAGO

APARTAMENT

# NR 109



Działka Nr 168/1  
Serock



## 64,37 m<sup>2</sup>

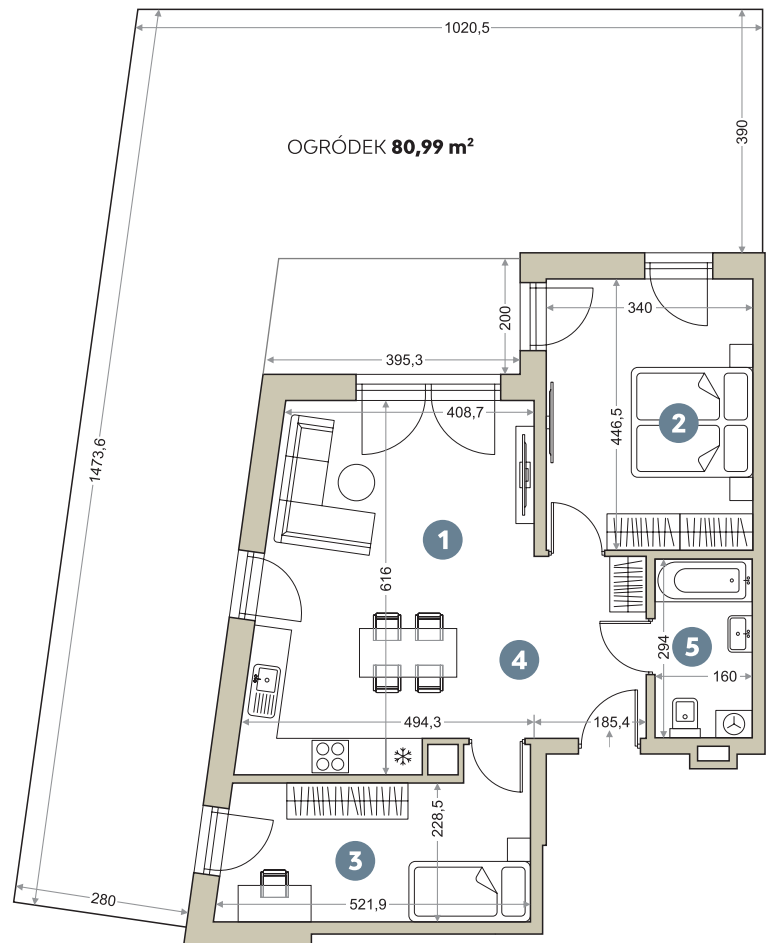
CENA

### BUDYNEK 1 KLATKA A

- 1. Pokój z aneksem kuchennym **26,70 m<sup>2</sup>**
- 2. Pokój **15,18 m<sup>2</sup>**
- 3. Pokój **12,26 m<sup>2</sup>**
- 4. Hol **5,53 m<sup>2</sup>**
- 5. Łazienka **4,70 m<sup>2</sup>**

**64,37 m<sup>2</sup>**

PARTER





PORTO LAGO

